

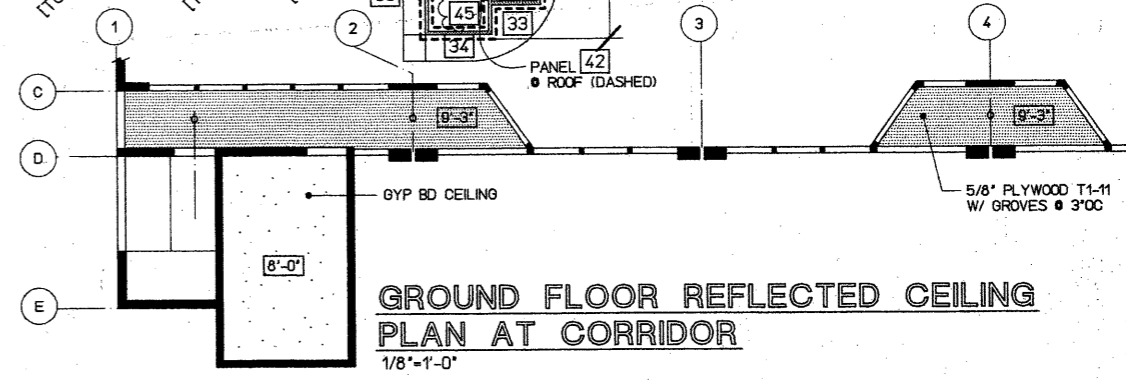
FOOTING SCHEDULE

MARK	SIZE		REINFORCING BARS			REMARKS
	WXL	THICK *T*	*A*	*B*	*C*	
F-1	4'-0" SQ.	12"	4-#4	4-#4	---	1/A-15 7/A-5
F-2	5'-8" SQ.	12"	6-#5	6-#5	8-#6	8/A-15
F-3	3'-0" X 8'-0"	12"	10-#4	5-#4	8-#4	8/A-15
F-4	2'-6" CONT	12"	#4@18	3-#4	8-#4 JOINT	1 TO 6/A-15

SEE SHEET A-15 FOR DETAILS

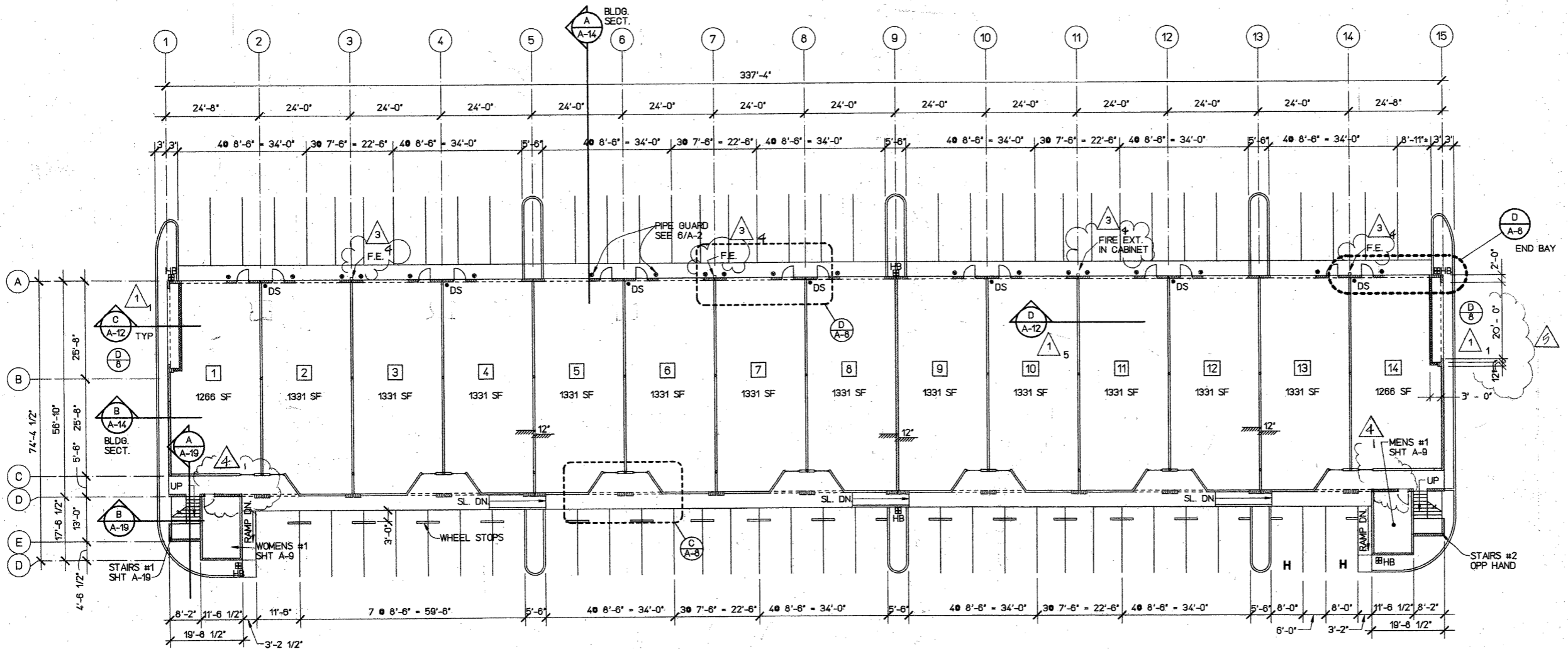
PIPE COLUMN SCHEDULE

MARK	SIZE	REMARKS
C-1	5" Ø PIPE COLUMN	
C-2	6" Ø PIPE COLUMN	
C-3	3-1/2" Ø PIPE COLUMN	
C-4	W6x25 COL	SEE 8/A-16

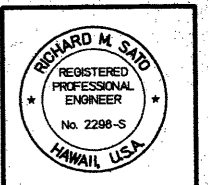


BUILDING C3 - FOUNDATION PLAN

GROUND FLOOR REFLECTED CEILING PLAN AT CORRIDOR



BUILDING C3 - GROUND FLOOR PLAN



THIS WORK WAS PREPARED BY ME OR UNDER MY SUPERVISION AND CONSTRUCTION OF THIS PROJECT WILL BE UNDER MY SUPERVISION. I AM A LICENSED PROFESSIONAL ENGINEER AS DEFINED UNDER SECTION 10-82.2 OF CHAPTER 103, RULES OF THE BOARD OF PROFESSIONAL ENGINEERS, ARCHITECTS AND LAND SURVEYERS STATE OF HAWAII.

RICHARD M. SATO & ASSOCIATES, INC.
 CONSULTING ENGINEERS CIVIL & STRUCTURAL
 HONOLULU, OAHU, HAWAII WAILUKU, MAUI, HAWAII

Kihei Commercial Center
PHASE 1 C
 Kihei, Maui, Hawaii
 TMK: 3-9-01ppor. of 33

DATE	DESCRIPTION	BY
8-15-89	ELEC. SERVICE AREA & STUD. WALL DET.	
10-25-89	CLARIFICATION & BLDG DEPT COMMENTS	
11-18-89	CLARIFICATION	
12-4-89	CLARIFICATION	

DESIGN BY: _____
 DRAWN BY: _____
 CHECKED BY: _____
 DATE: July 24, 1989
 JOB NO: 8772
 SHEET **A-5**
 OF 19 SHEETS 64

Plot on 31-Oct-89 13:29:30
 \Users\project\khe\c-5